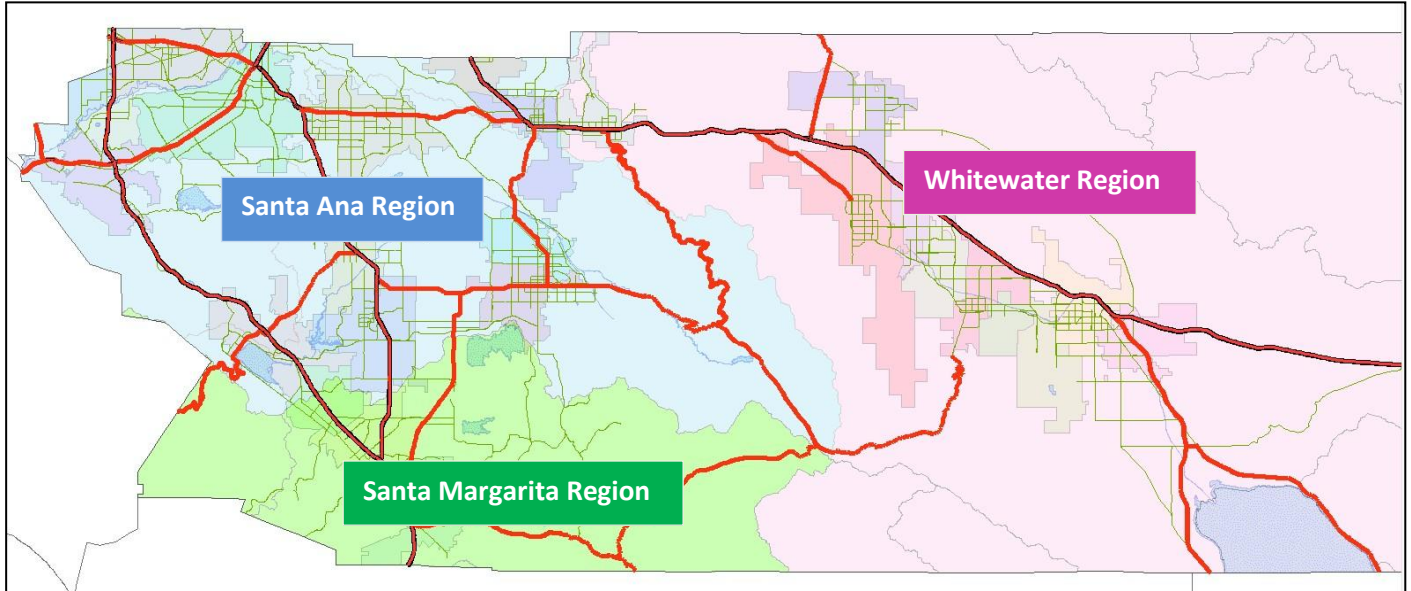


Water Quality Management Plan Applicability Checklists and Other Development Project Checklists for all watersheds/areas in unincorporated Riverside County.

All projects in unincorporated Riverside County shall complete the appropriate **Water Quality Management Plan (WQMP) Applicability Checklist** to confirm if WQMP requirements apply, and be submitted with your project's application. In addition, if the project is exempt from WQMP requirements and is in the **Santa Margarita Region**, the project shall complete the **"Other Development Project Checklist"** and submit to the Riverside County Transportation Department.



If WQMP requirements apply, a Preliminary WQMP shall be submitted and approved by the Transportation Department prior to entitlements, and a Final WQMP shall be submitted and approved by the Transportation Department prior to any building or grading permit.

Permanent Water Quality facilities (known as Post-Construction Best Management Practices (BMPs)) are required to address expected pollutant loads and higher runoff characteristics from most private development projects and public capital projects. These Post-Construction BMPs are designed with a Project-Specific WQMP. WQMP requirements are separate from the requirements for temporary impacts during the construction phase (i.e. Stormwater Pollution Prevention Plan (SWPPP), and construction BMPs).

Three State Regional Water Quality Control Boards regulate water quality requirements in Riverside County. Each State Regional Board has different WQMP requirements for their jurisdiction. Templates and guidance documents for each region are available through the compliance document links below. Applicability Checklists are included to verify if WQMP requirements apply for a given project or if no WQMP is required.

Santa Ana Region: <http://rcflood.org/NPDES/SantaAnaWS.aspx>

Santa Margarita Region: <http://rcflood.org/NPDES/SMRWMA.aspx>

Whitewater Region: <http://rcflood.org/NPDES/WhitewaterWS.aspx>

As of November 1, 2018, all WQMPs for development projects will be reviewed by the Riverside County Transportation Department, for the unincorporated portions of Riverside County. For Riverside County Flood Control facilities, typically storm drains larger than 36-inch diameter, the Riverside County Flood Control District will continue to review the Hydrology studies and their associated improvement plans, but Transportation will review the WQMP on behalf of Flood Control.

**Checklist for Identifying Projects Requiring a Project-Specific Water Quality Management Plan (WQMP)
within the Whitewater River Region**

Project File No.	
Project Name:	
Project Location:	
Project Description:	

All applications for discretionary New Development and Redevelopment projects that fall into one of the Priority Development Project categories submitted to the local permitting authority on or after December 31, 2014 require preparation, approval, and implementation of a project-specific WQMP that complies with the WQMP Guidance document.

The eight Priority Development Project Categories are:	Yes	No
Single-family hillside residences that create 10,000 square feet or more of impervious area where the natural slope is 25% or greater;		
Single-family hillside residences that create 10,000 square feet of impervious area where the natural slope is 10% or greater where erosive soil conditions are known;		
Commercial and Industrial developments of 100,000 square feet or more;		
Automotive repair shops (Standard Industrial Classification (SIC) codes ¹ 5013, 7532, 7533, 7534, 7537, 7538, and 7539)		
Retail gasoline outlets disturbing greater than 5,000 square feet;		
Restaurants disturbing greater than 5,000 square feet;		
Home subdivisions with 10 or more housing units; and,		
Parking lots of 5,000 square feet or more or with 25 or more parking spaces, and potentially exposed to Urban Runoff.		

¹ Descriptions of SIC codes can be found at <http://www.osha.gov/pls/imis/sicsearch.html>.

DETERMINATION: Check the box for applicable determination.

Any questions answered "YES"

Project requires a project-specific WQMP. Electronic submittals are encouraged on CD and required for the approved documents.

All questions are answered "NO"

Project requires incorporation of Site Design Best Management Practices (BMPs) and Source Control BMPs imposed through Conditions of Approval or permit conditions.