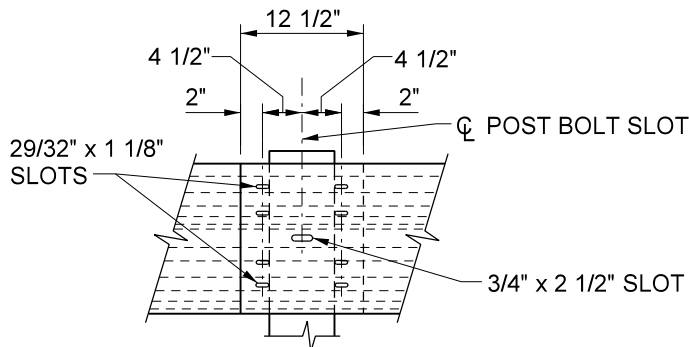


NOTES:

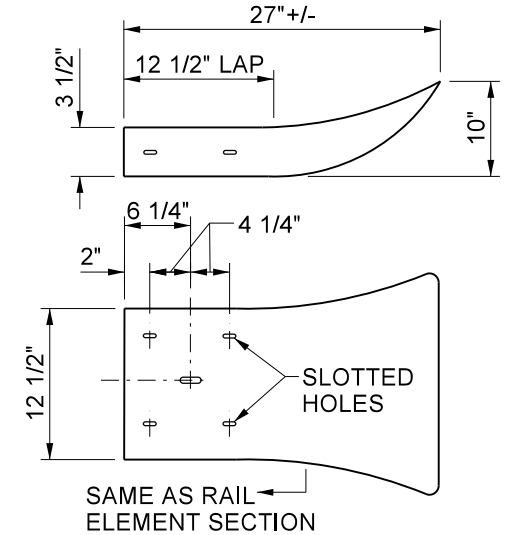
1. GUARD RAIL ELEMENT MAY BE EITHER STEEL OR ALUMINUM.
2. STEEL RAIL SHALL BE HOT-DIP GALVANIZED PER ASTM DESIGNATION A-123.
3. STEEL RAIL THICKNESS SHALL BE MIN 12 GAUGE.
4. ALUMINUM RAIL THICKNESS SHALL BE MIN 0.105 IN.
5. MEET CURRENT CALTRANS STANDARDS OR DESIGNATE BY ENGINEER.

TYPICAL POST SPACING 12'-6" OC

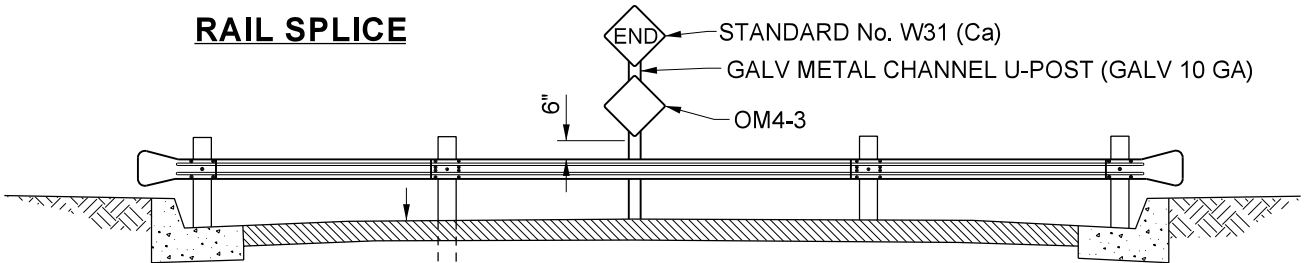


5/8" x 1 1/4" BUTTON HEAD OVAL SHOULDER BOLTS WITH 1 1/4" RECESSED HEX NUTS - TOTAL: 8 PER SPLICE AND 4 PER TERMINAL SECTION.

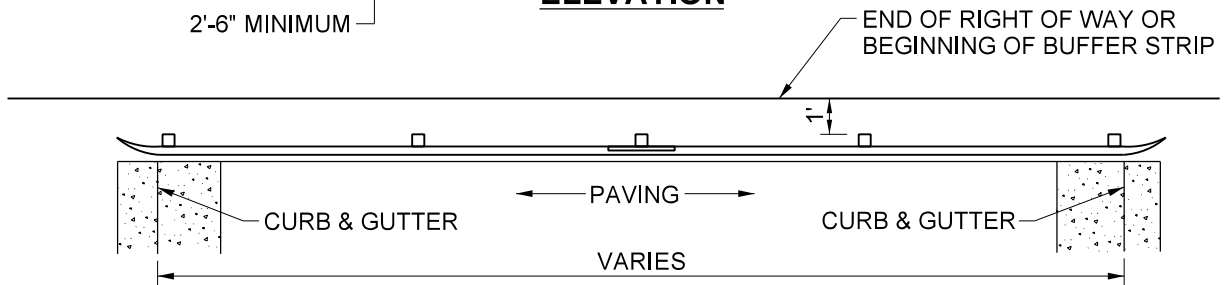
RAIL SPLICE



TERMINAL SECTION



ELEVATION



PLAN

NOT TO SCALE

PREPARED UNDER THE SUPERVISION OF:

Mark Lancaster

11/30/22
DATE

DIRECTOR OF TRANSPORTATION
MARK LANCASTER, P.E.



COUNTY OF RIVERSIDE

BARRICADE

STANDARD No. 810

REVISION	DESCRIPTION	MARK	DATE	APPROVED